



沈阳海纳自动化设备有限公司

Introduction of Shenyang Haina automation equipment Co., Ltd.

<http://www.hinaaauto.cn>

公司简介

Introduction



沈阳海纳自动化设备有限公司，坐落于国家级开发区-沈阳市经济技术开发区五号路，占地面积约9000平方米，建筑面积约6000平方米，是集研发、设计、制造、服务于一体的技术创新型企业。公司与国内外知名企业及省内高等院校形成良好的战略合作，我们的产品涉及金属焊接及切割、定制机床及上下料、自动化物流、产品检测等多个领域；我们的设备被应用到工程机械、船舶制造、机车车辆、汽车制造、食品加工等行业。

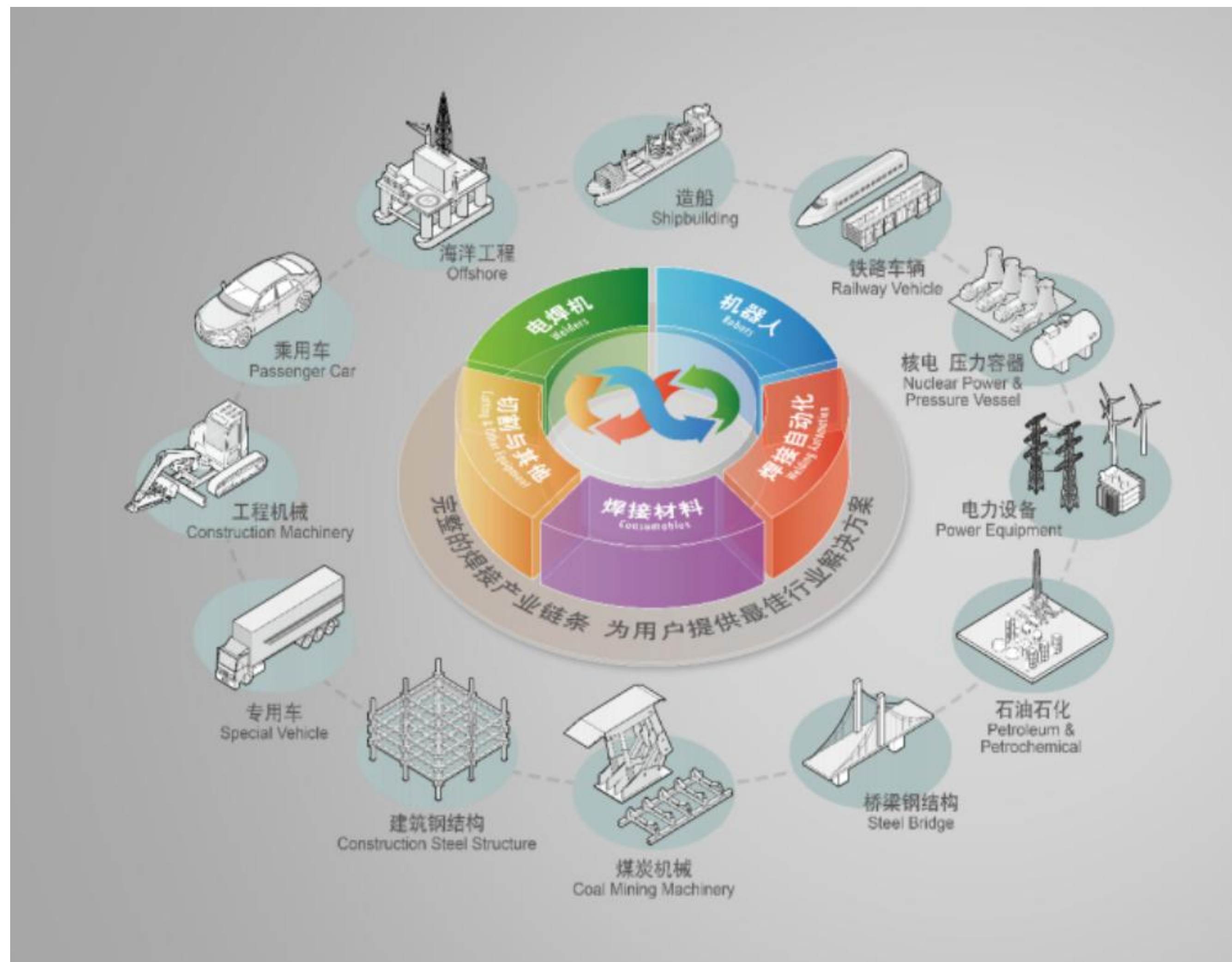
Shenyang Haina Automation Equipment Co., Ltd., located at No. 5 Road, Shenyang Economic and Technological Development Zone, a national development zone, covers an area of about 9000 square meters and a construction area of about 6000 square meters. It is a technological innovation enterprise integrating R & D, design, manufacturing and service. The company has established good strategic cooperation relationship with well-known enterprises at home and abroad and colleges and universities in the province. Our products involve metal welding and cutting, customized machine tools and loading and unloading, automated logistics, product testing and other fields; Our equipment is applied to engineering machinery, shipbuilding, rolling stock, automobile manufacturing, food processing and other industries.



公司历程Company History

- 1996年1月 公司成立松下（沈阳）焊机商行代理松下电焊机、机器人及开元集团产品。
- 2006年3月 公司迁入沈阳经济技术开发区，成立沈阳海纳自动化设备有限公司
- 2016年1月 系统集成板块独立为沈阳普瑞塞思自动化系统有限公司
- 2019年2月 作为德国Z-LASER中国总代理成立沈阳泽雷兹智能科技有限公司
- Jan. 1996 Panasonic (Shenyang) Welding Machine Firm was established to be an agent of Panasonic electric welding machine, robot and products of Kaiyuan Group .
- Mar. 2006 The company moved into Shenyang Economic and Technological Development Zone and established Shenyang Haina Automation Equipment Co., Ltd.
- Jan. 2016 The system integration module became independent and established Shenyang Precise Automation System Co., Ltd.
- Feb. 2019 Shenyang Z-LASER Intelligent Techongoly Co., Ltd. was established as the general agent of German Z-LASER in China

自动化系统集成 Automation System Integration



自动化解决方案的优势： Advantages of automation solutions:

- 提高产品质量及稳定性
Improve product quality and stability
- 提升效率
Improve efficiency
- 降低持续成本
Reduce continuous costs
- 降低劳动强度
Reduce labor intensity
- 节省人工
Labor saving
- 提高管理及时性与准确性
Improve management timeliness and accuracy
-

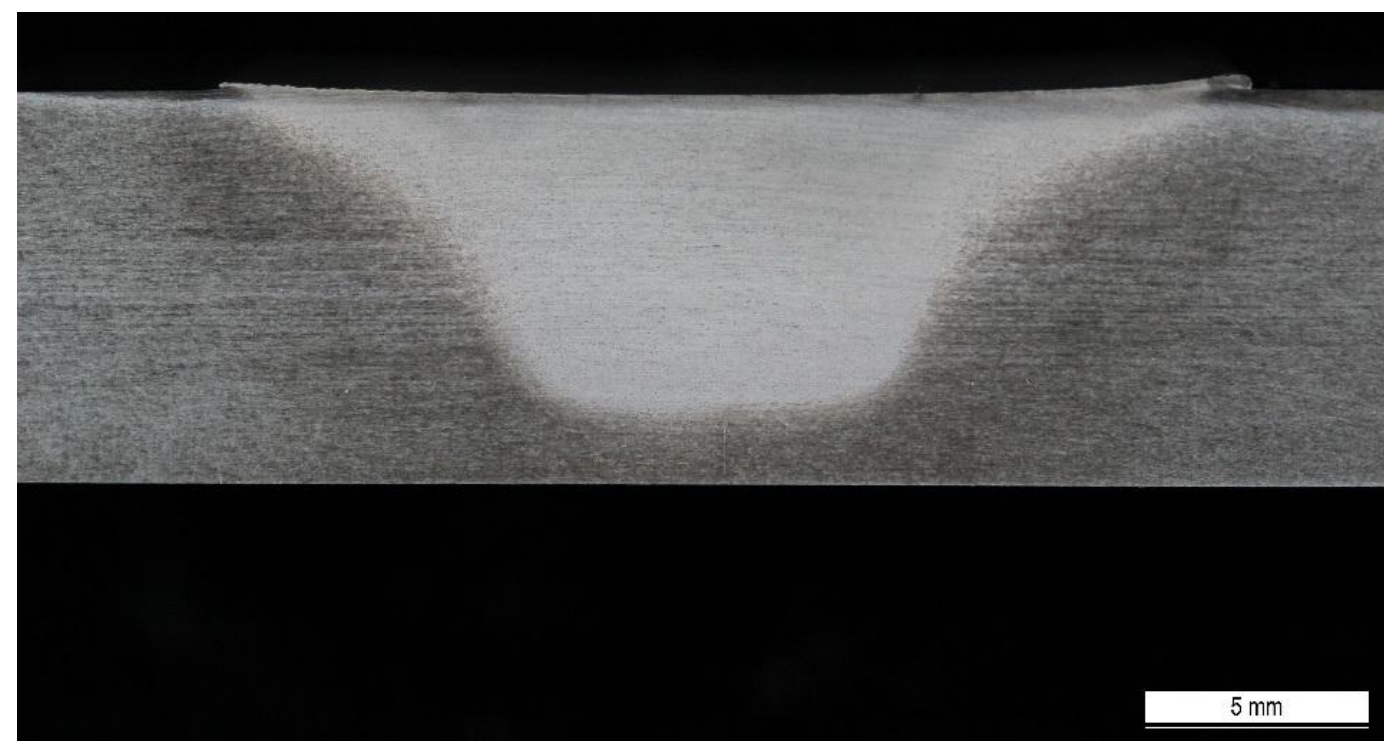
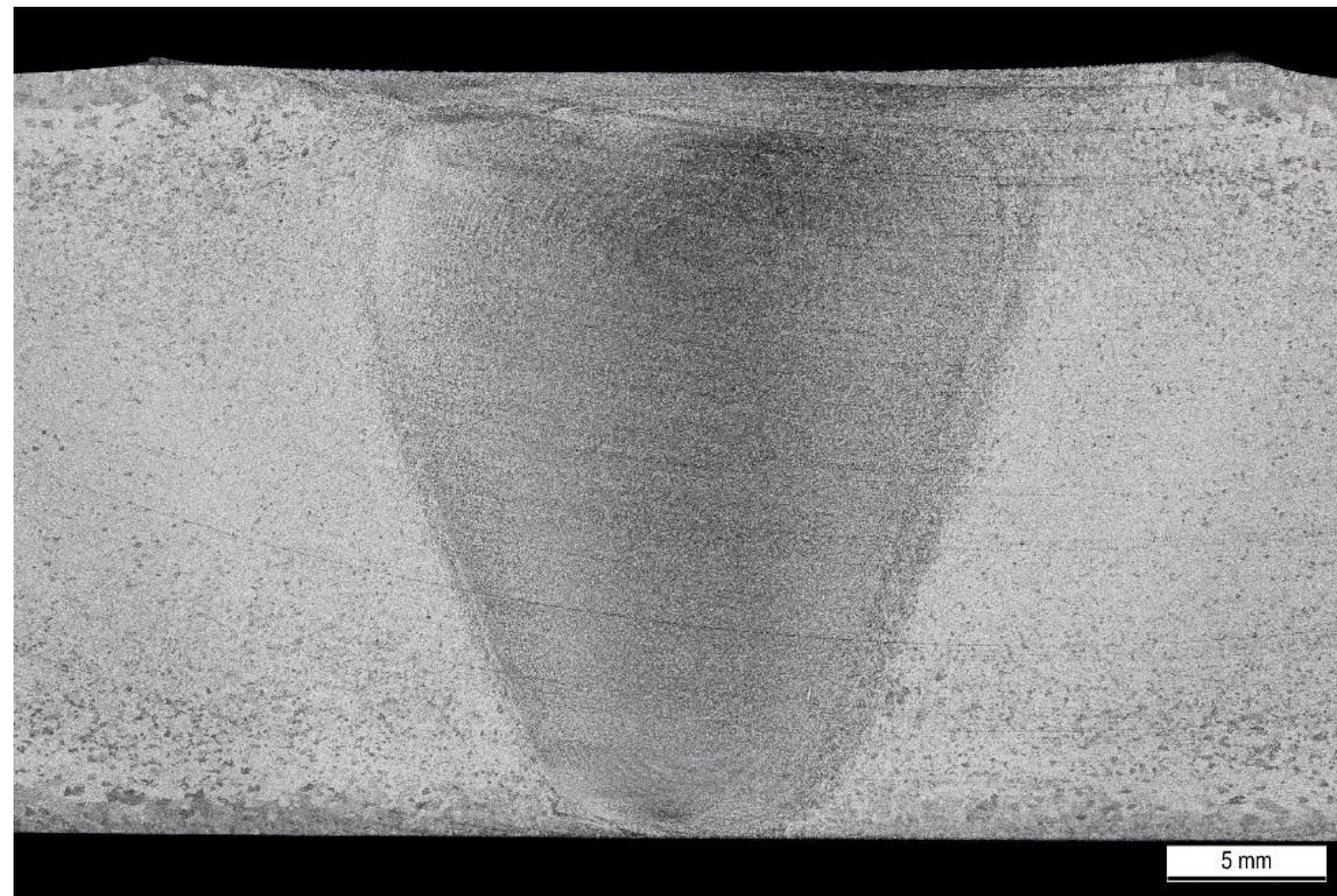
水切割机器人 Robot Water jet



International Cooperation



Friction Stir Welding

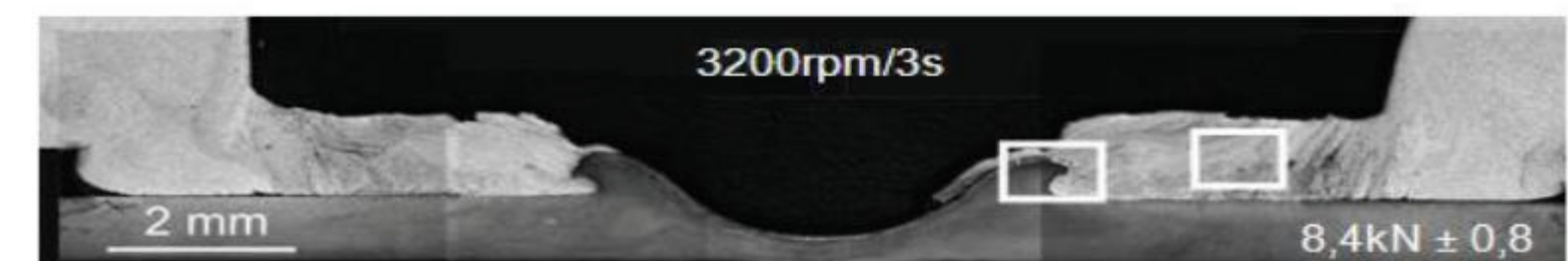


International Cooperation



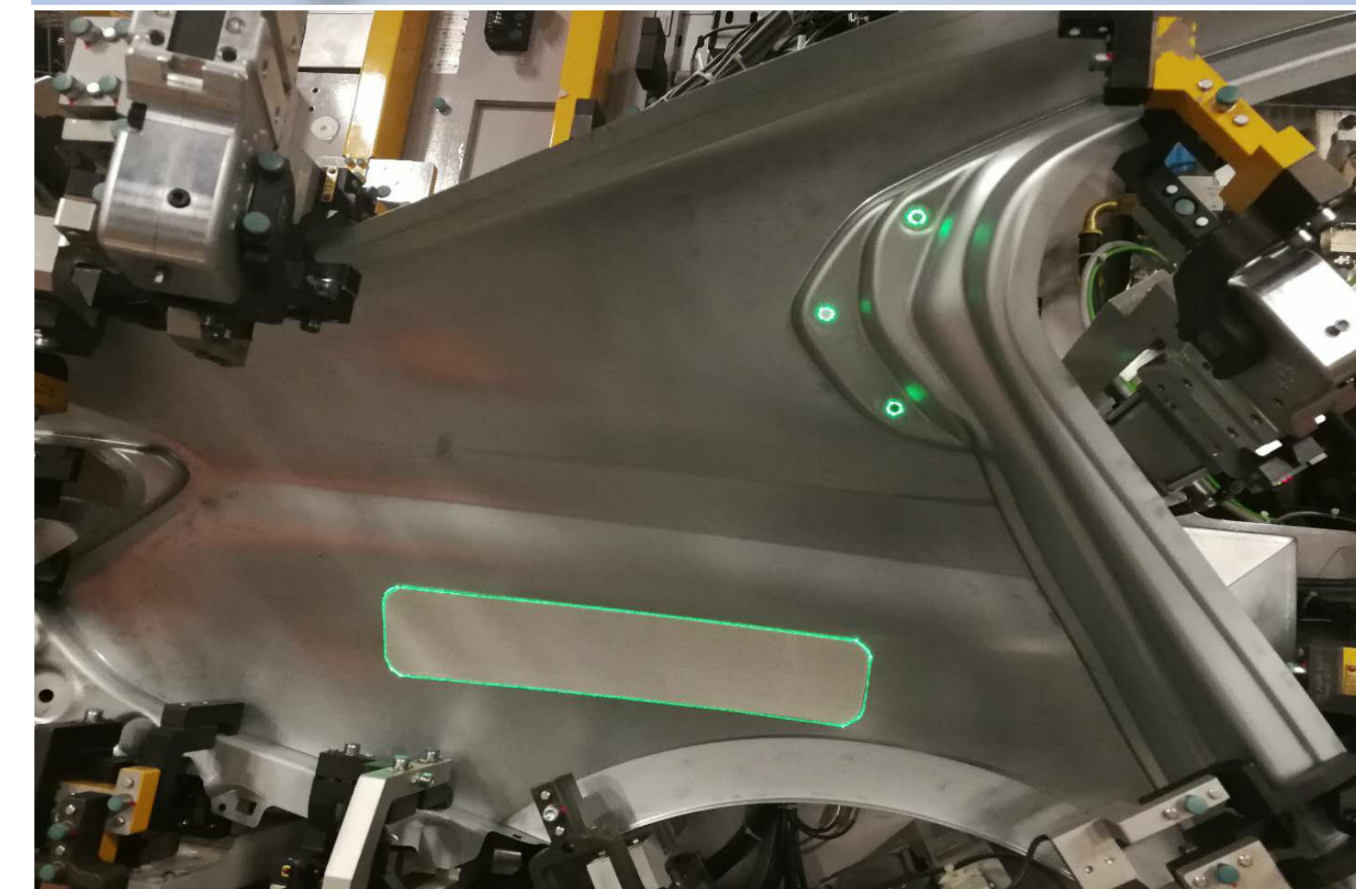
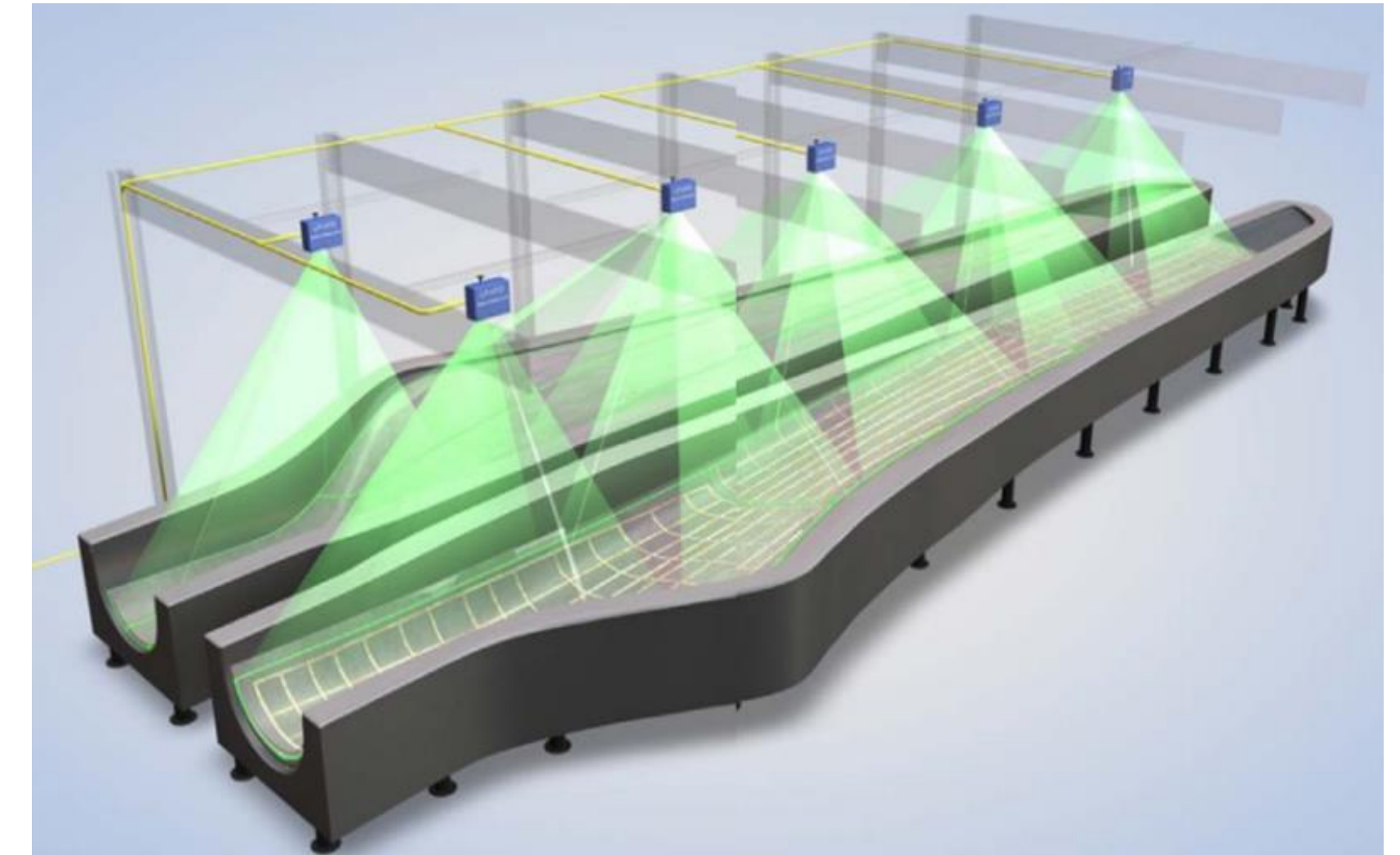
Robot Friction Stir Spot Welding

- Excellent welding quality
- Energy consumption is 1% to 2% of the traditional process
- The connection of dissimilar materials
- Effective response to the new energy vehicle weight reduction needs



Laser Projector

- Replacing the traditional positioning and calibration tools in the production process, avoiding the manufacturing cost of auxiliary tools (fixture/measuring tool/measuring tool) brought by the diversity of products.
- Greatly improve the production efficiency of products, reduce labor load.
- Effectively improve product reliability, consistency, reduce reject rate.
- Reduce staff training costs.





项目案例介绍

Project Case Introduction

Robot Welding/Robot Welding System

客户需求Customer requirement :

1. 待加工物料为焊接后汽车座椅骨架；切割完成后，将切割下的小块用于后续检测工站做焊后测试。

The material to be processed is the car seat skeleton after welding; After the cutting is completed, the cut piece will be used for the subsequent inspection station to do the penetration test.

2. 切割精度要求：切割精度要求1mm以内。

Cutting accuracy requirements: The cutting accuracy is less than 1mm

使用水切割优势 Advantage of using water jet

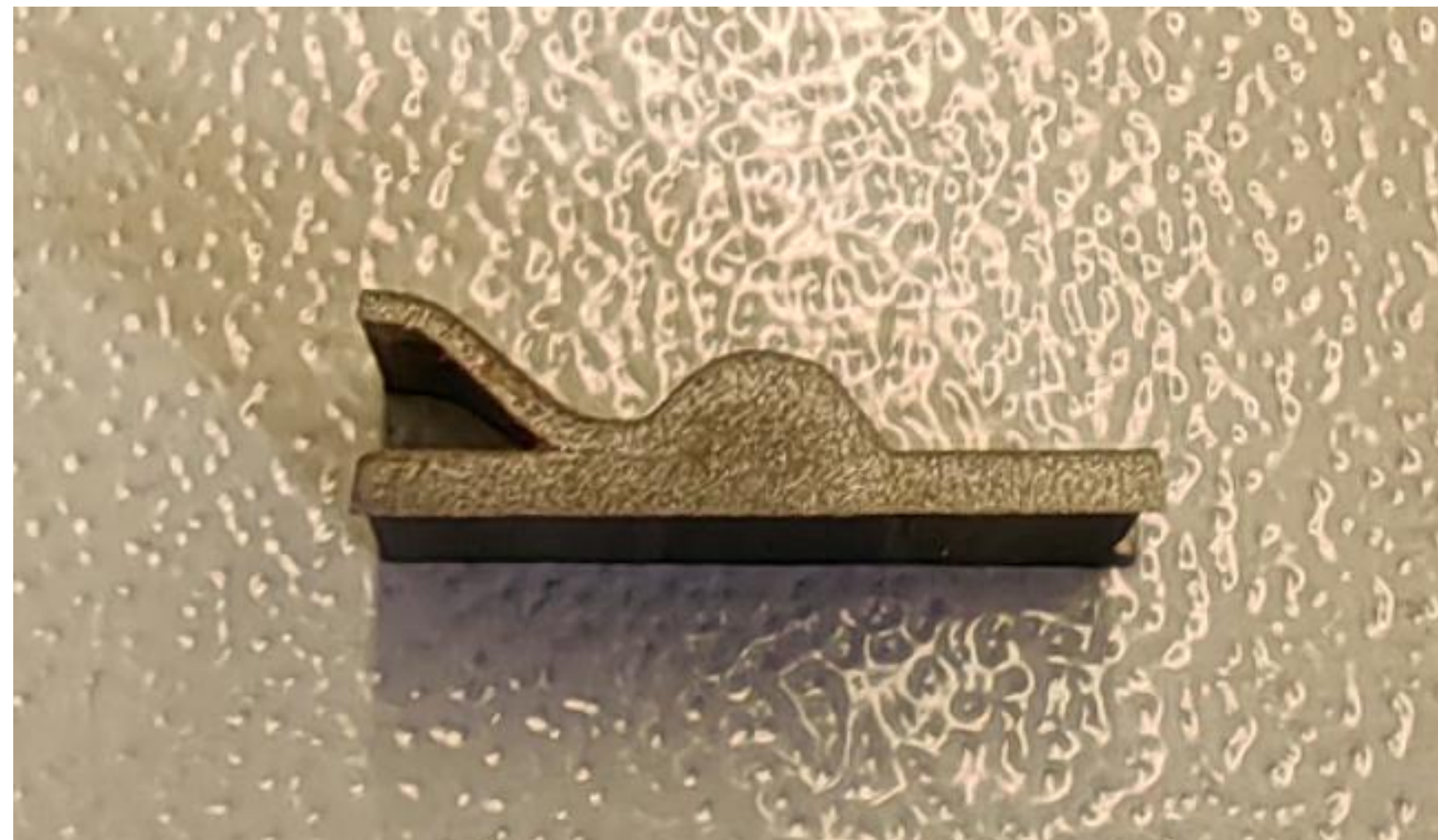
1. 冷态切割 Cold cutting

2. 切割表面好，用砂纸简单处理即可进行下一环节

The cutting surface is good, and the next step can be simply treated with sandpaper

3. 更好的切割位置适应性 Better cutting position adaptability

4. 降低劳动强度 Reduce labor intensity



工业机器人及机器人系统 Robot Welding/Robot Welding System



奔驰MMA座椅骨架 夹具出口

Mercedes Benz seat frame, Arc welding fixture (Export to Europe)



工业机器人及机器人系统 Robot Welding/Robot Welding System



戴姆勒H6 机器人弧焊工作站 Robot Workstation (Arc Welding) of Daimler H6



工业机器人及机器人系统 Robot Welding/Robot Welding System



BMW G38 座椅骨架 机器人弧焊工作站 Robot Workstation (Arc Welding) for BMW G38



工业机器人及机器人系统 Robot Welding/Robot Welding System



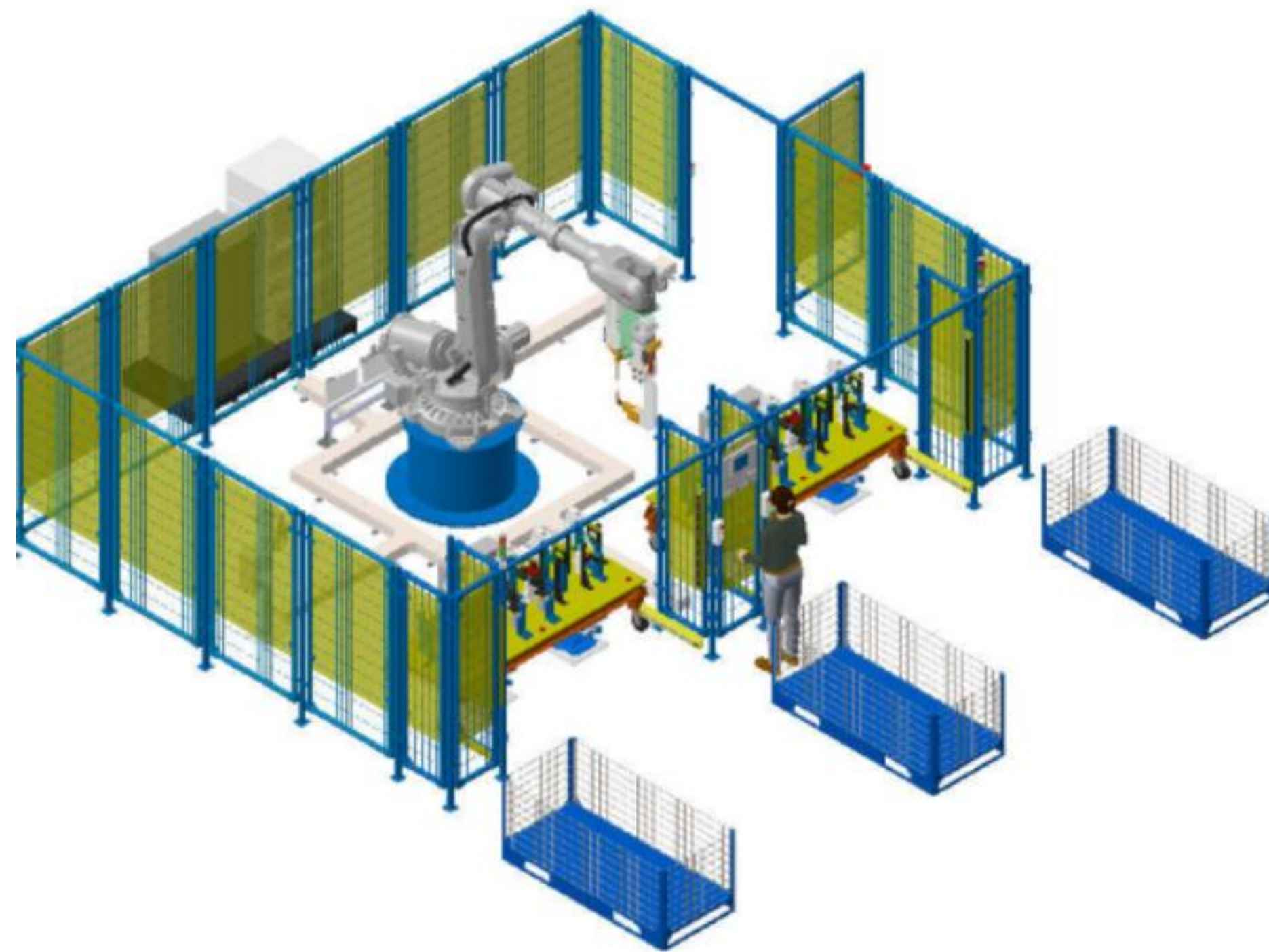
奔驰V214 Double layer 点焊工作站
Mercedes-Benz V214 Double layer Spot welding



工业机器人及机器人系统 Robot Welding/Robot Welding System



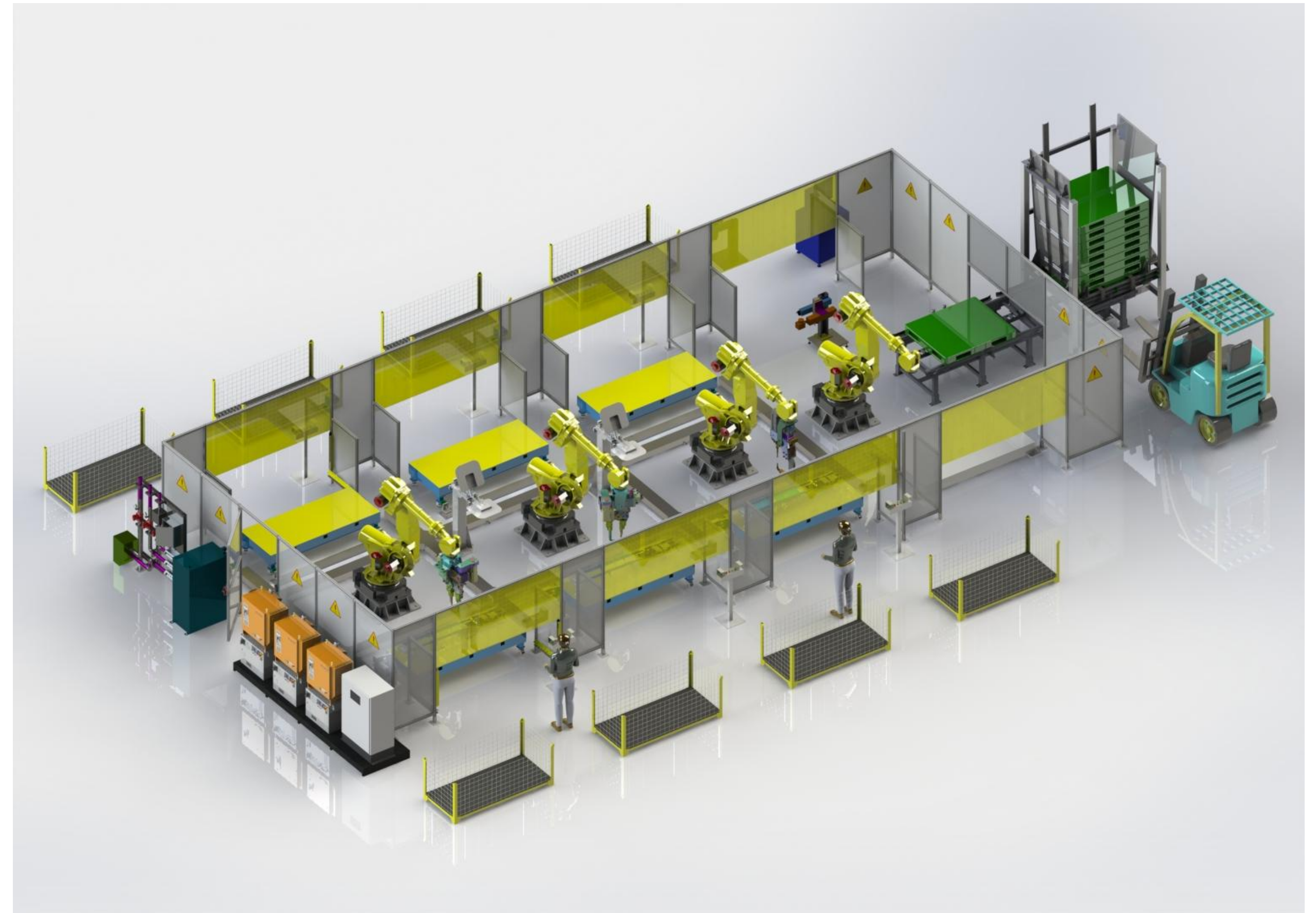
宝马前地板配件点焊机器人
Spot welding BMW front floor parts



工业机器人及机器人系统 Robot Welding/Robot Welding System



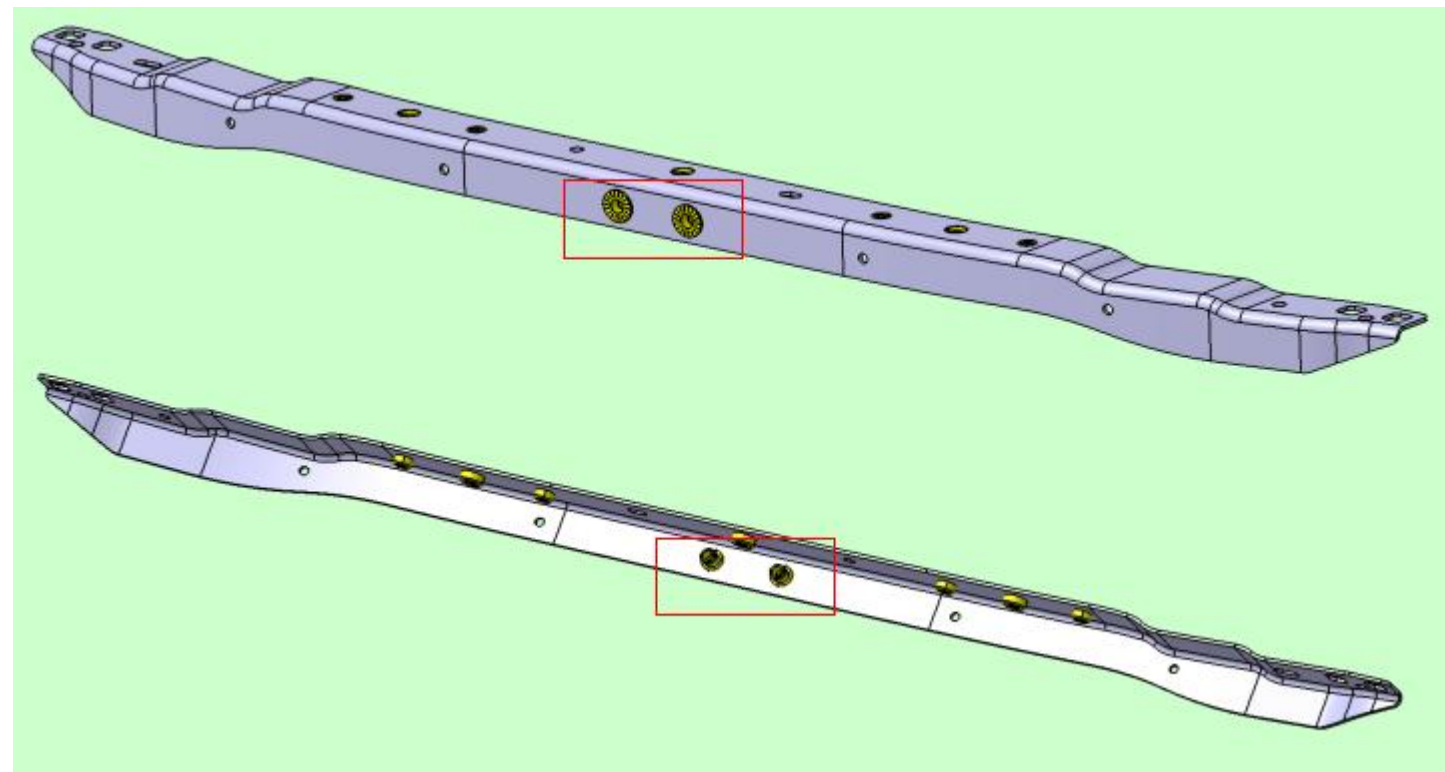
宝马G28G68中通道机器人点焊工作站 BMW G28G68 Mid Channel Robot Spot Welding Workstation



工业机器人及机器人系统 Robot Welding/Robot Welding System



拉铆工作站 Rivet Working Station



工业机器人及机器人系统 Robot Welding/Robot Welding System



螺柱焊 Stub Welding



铝合金白车身弧焊夹具、检具

Arc welding fixture and gauge for aluminium white body welding line



项目：57夹具17检具

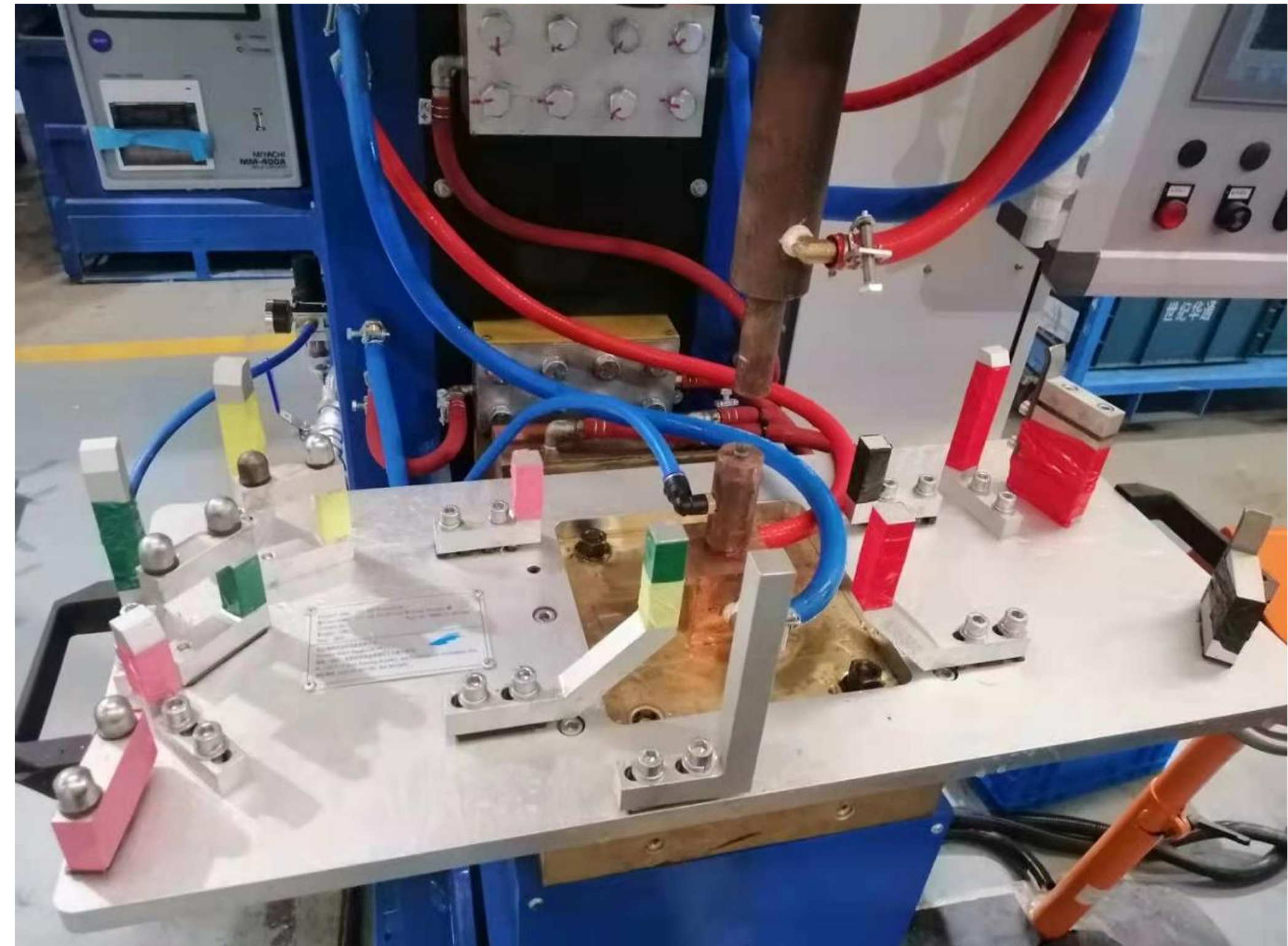
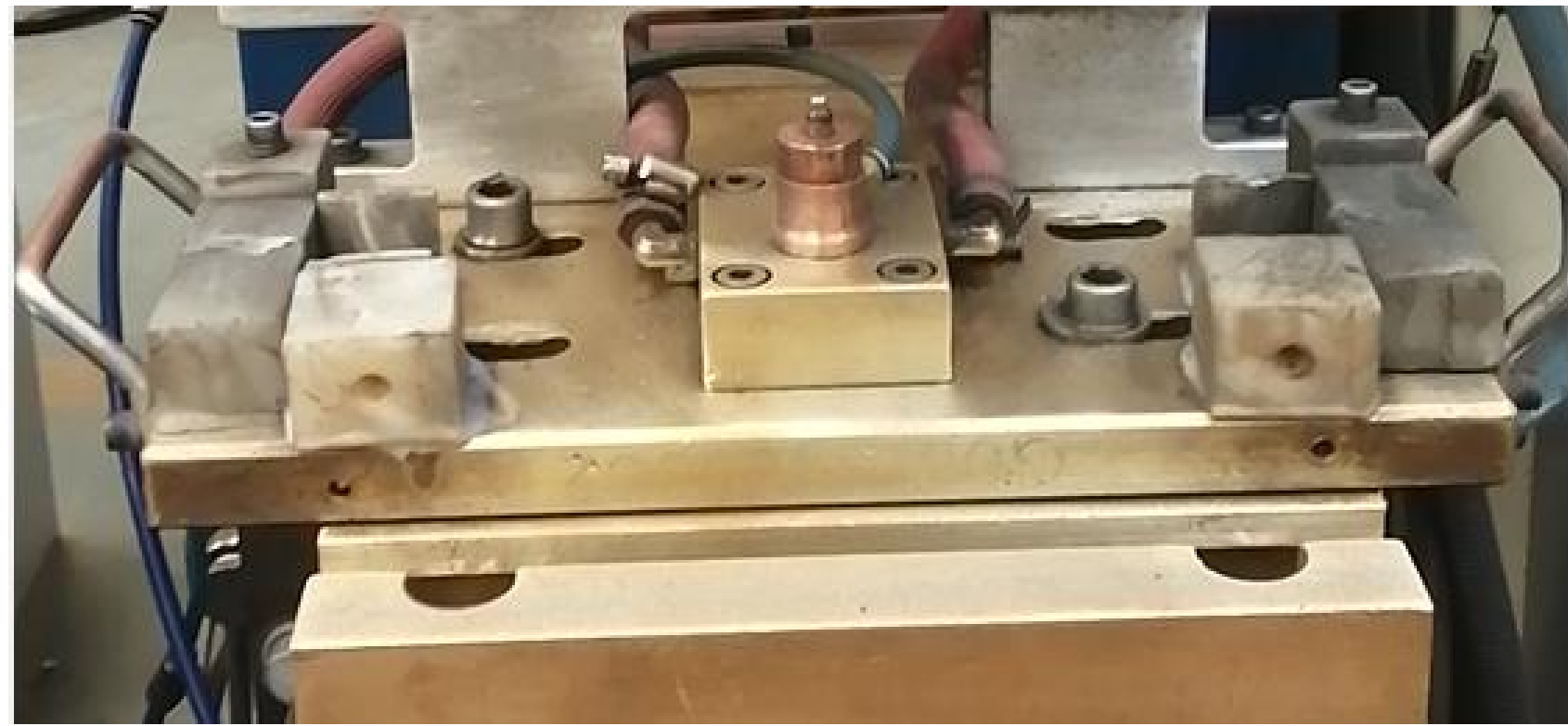
Project: 57 fixture+17 checking fixture



工业机器人及机器人系统 Robot Welding/Robot Welding System



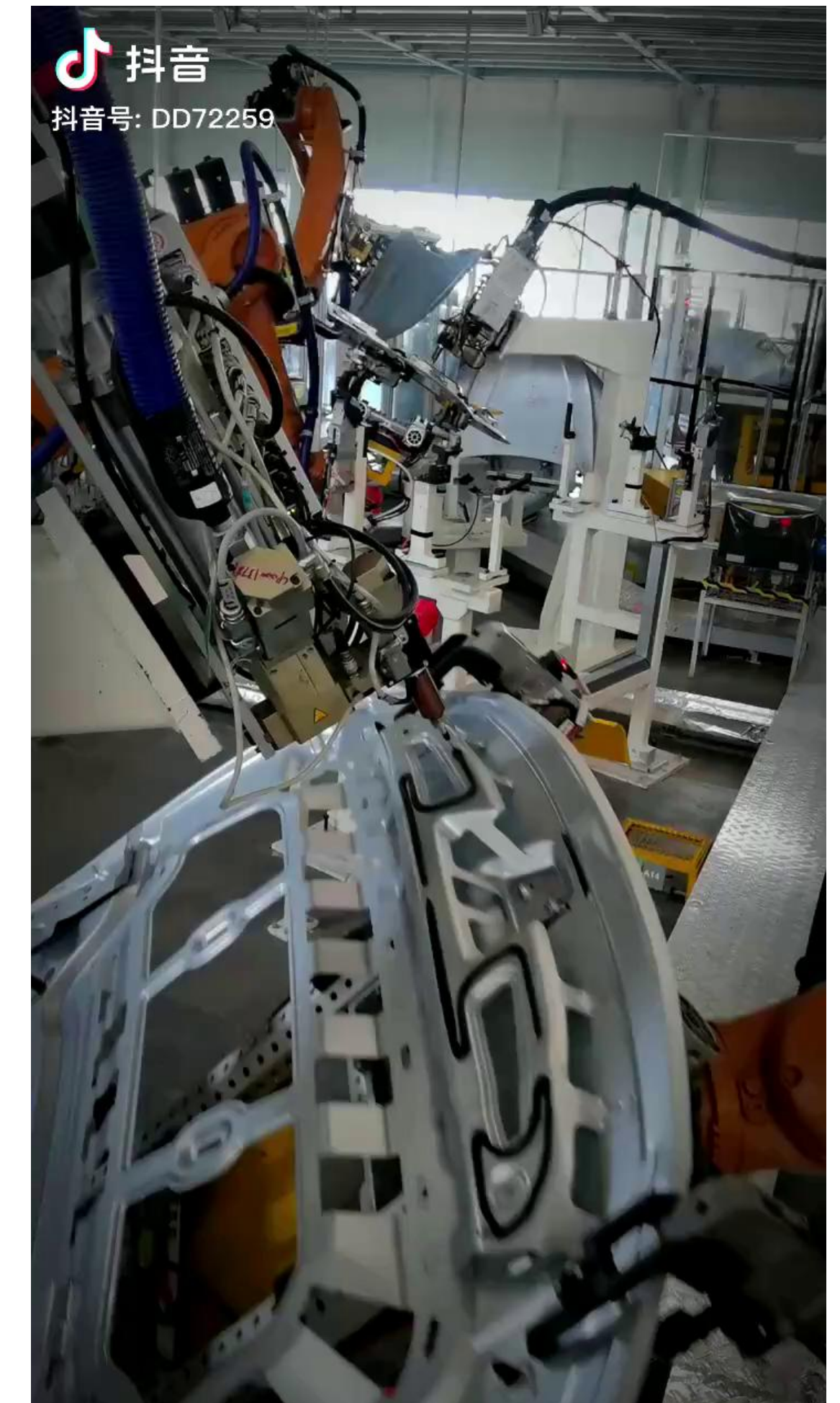
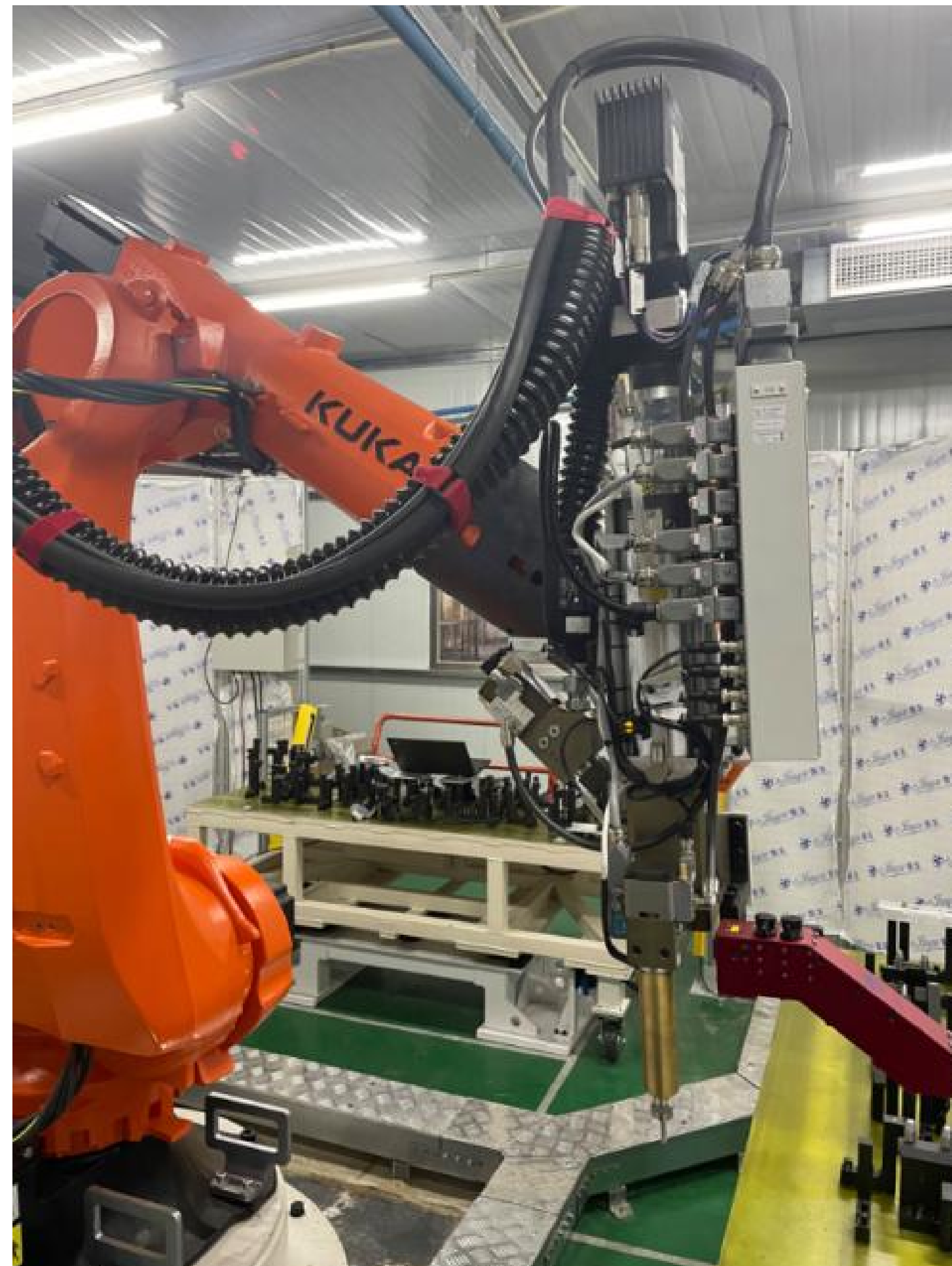
凸焊机 Projection welding machine



工业机器人及机器人系统 Robot Welding/Robot Welding System



涂胶机器人 Glue-robot



工业机器人及机器人系统 Robot Welding/Robot Welding System



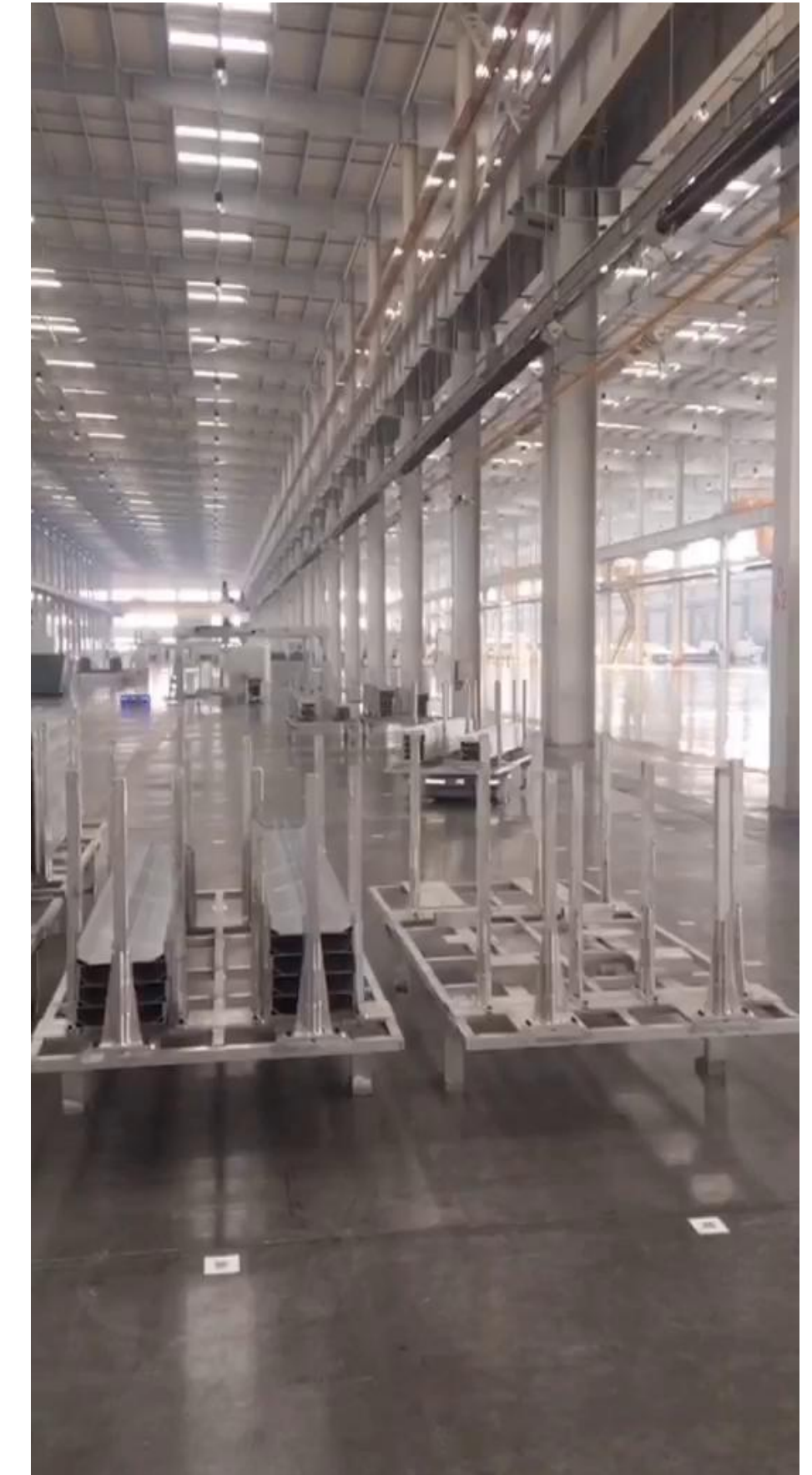
宝马G08底盘弯管机床机器人上下料系统 BMW G08 chassis bending machine robot loading and unloading system



工业机器人及机器人系统 Robot Welding/Robot Welding System



铝模板焊接生产线 Aluminum template welding production line



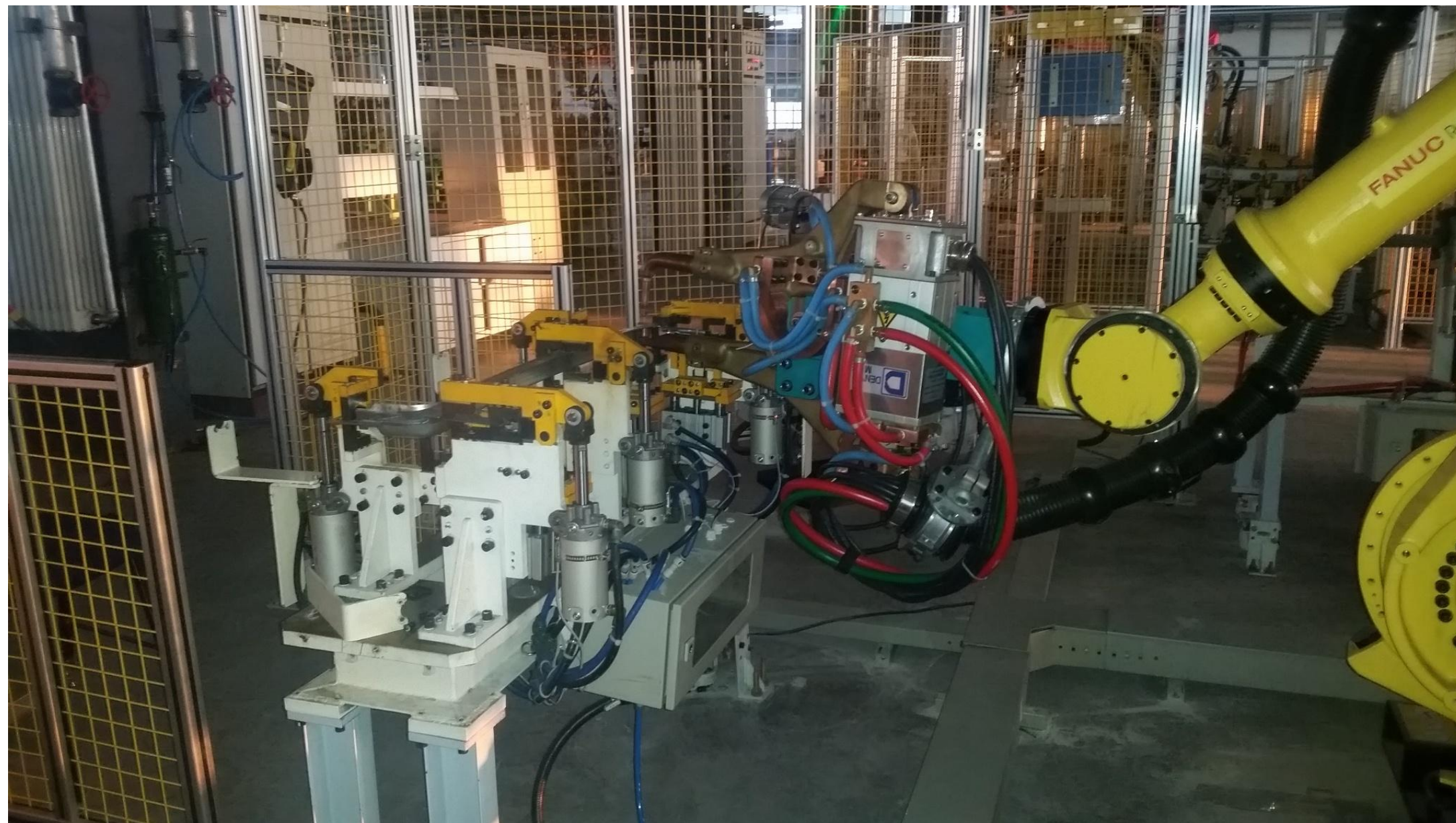
我们的客户
Our Customers



工业机器人及机器人系统 Robot Welding/Robot Welding System



北京奔驰A/B/C柱总成点焊系统 A/B/C column assembly spot welding system for Mercedes-Benz Beijing

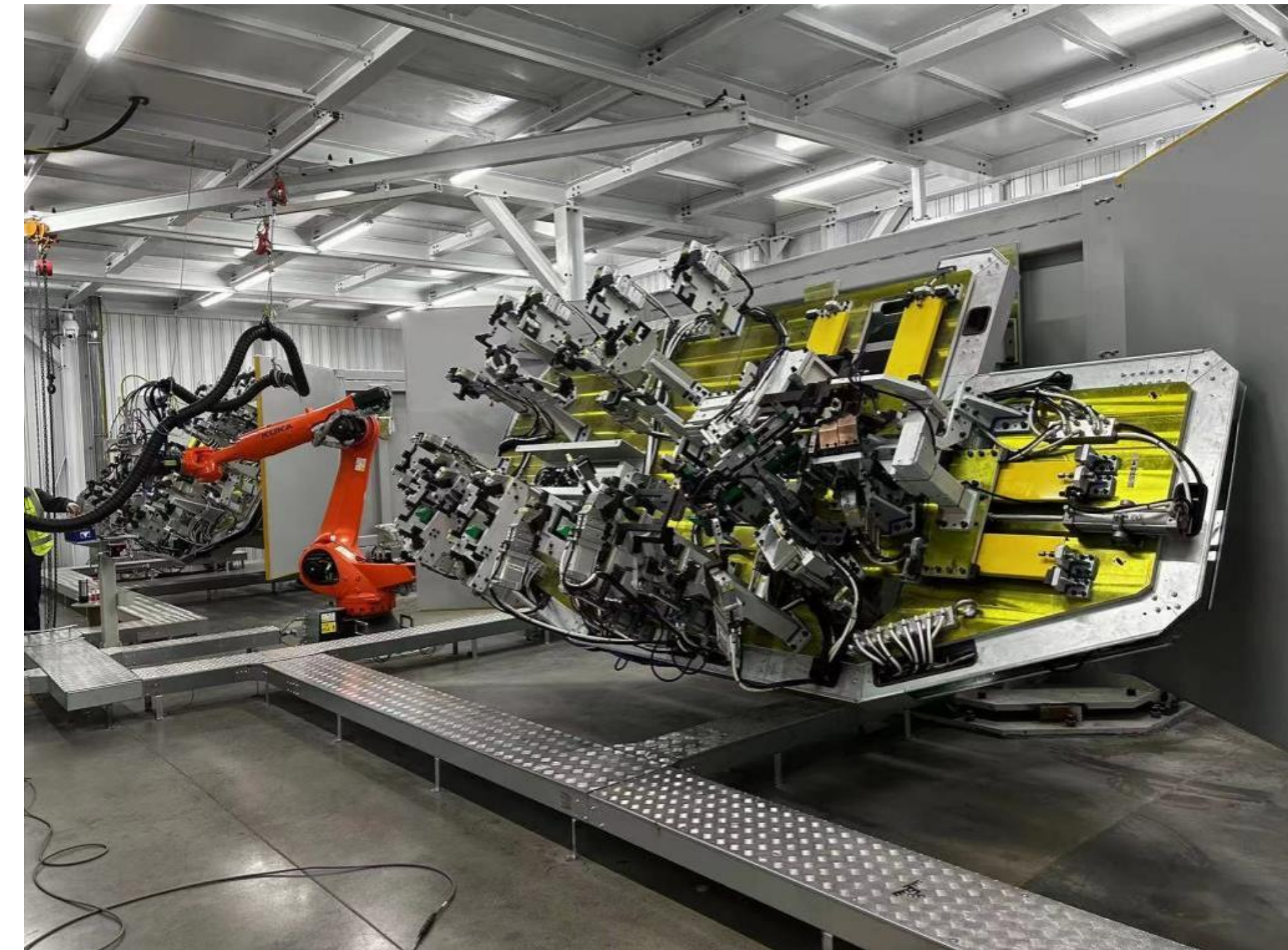
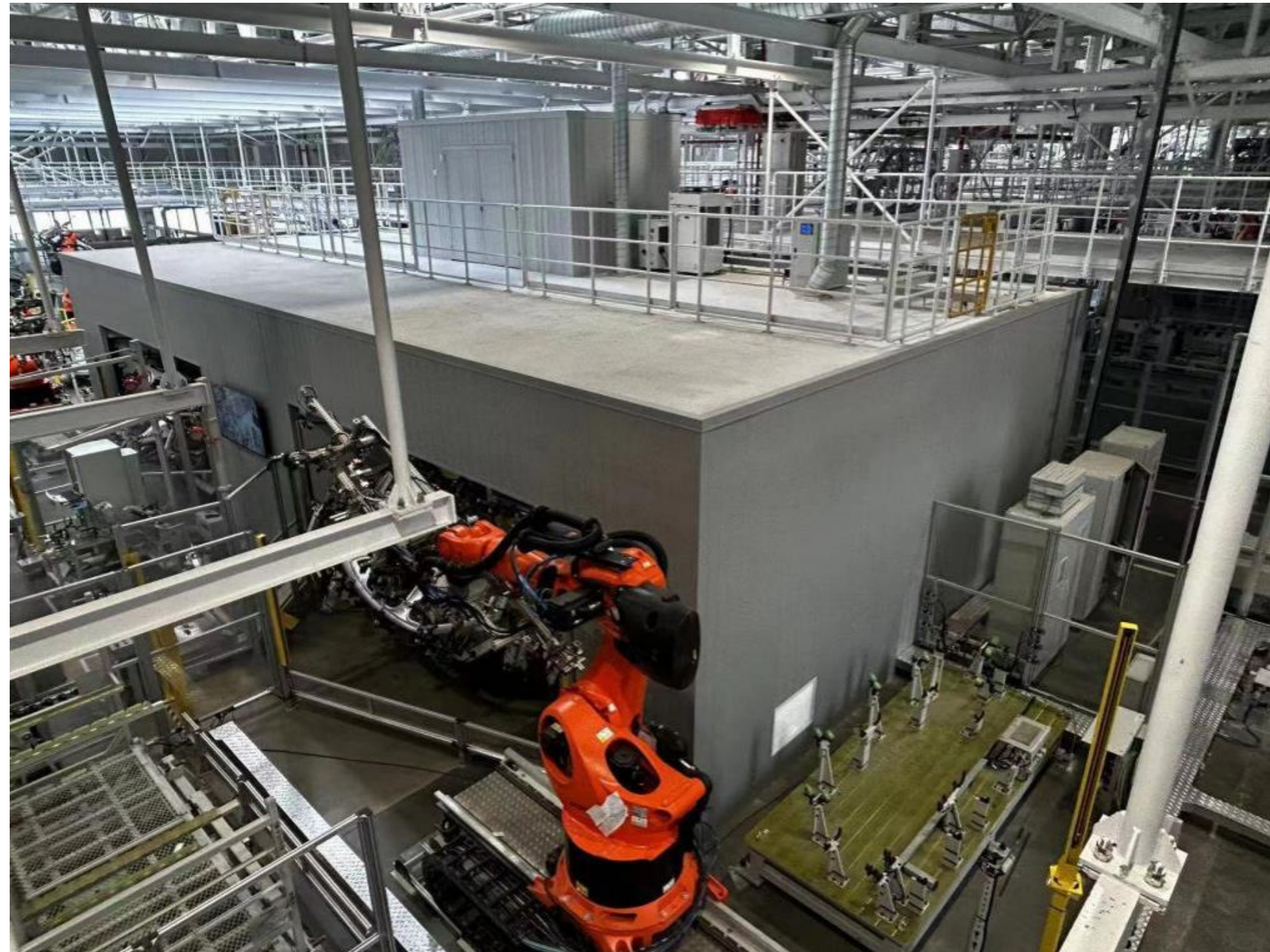
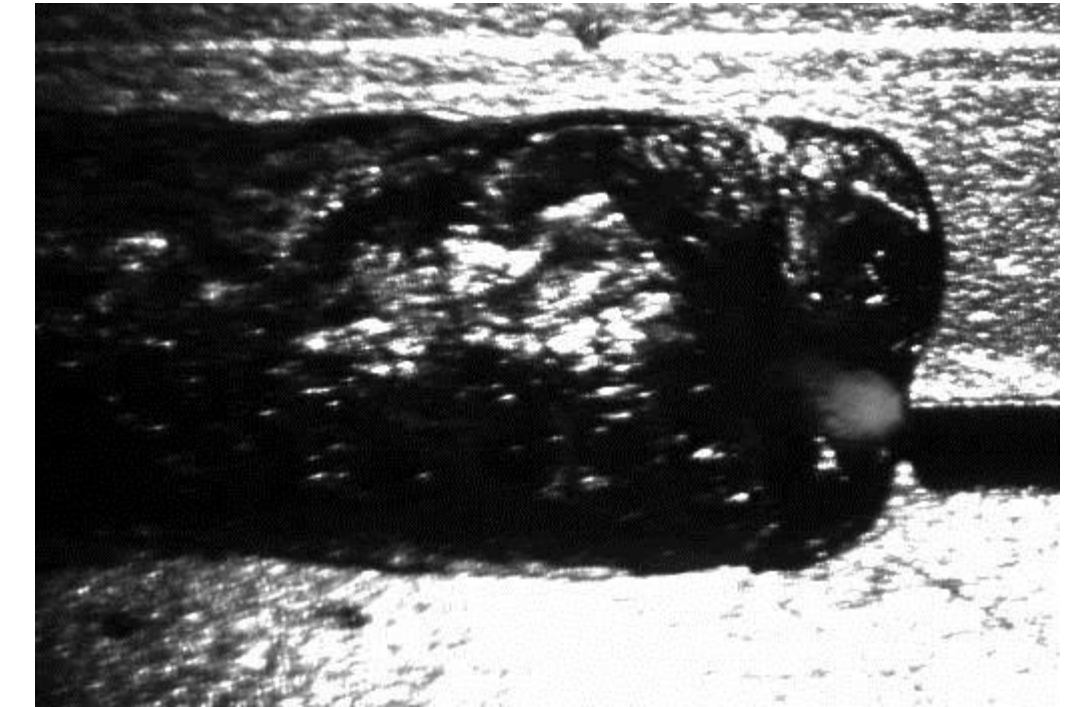


Project Case for Laser welding



蔚来汽车F2铝侧围激光焊接
F2 Aluminum side Laser welding for NIO

节拍 20JPH Cycle time: 20JPH



Project Case for Laser welding

V551 VOLVO Chengdu

节拍(Cycle time): 30JPH

材质: 镀锌板 galvanized sheet

工艺: 激光飞行焊接 Laser fly welding



手持激光焊Handheld laser welding



手持激光Handheld laser welding



双回路冷媒直冷技术 Dual circuit refrigerant direct cooling technology

与同类竞品常用的风冷散热不同，STR-HW系列手持焊机从两点出发，进行了制冷思路的新突破并重新设计制冷系统回路。

Unlike the commonly used air-cooled heat dissipation of similar competitors, the STR-HW series handheld welding machine has made a new breakthrough in refrigeration ideas and redesigned the refrigeration system circuit from two perspectives

更强的环境适应性 Stronger environmental adaptability

设备研发冷媒直冷系统，手持焊机运行温度为 $-20^{\circ}\text{C}\sim 60^{\circ}\text{C}$ ，具有良好的环境温度适应性，可连续 7×24 小时不间断工作

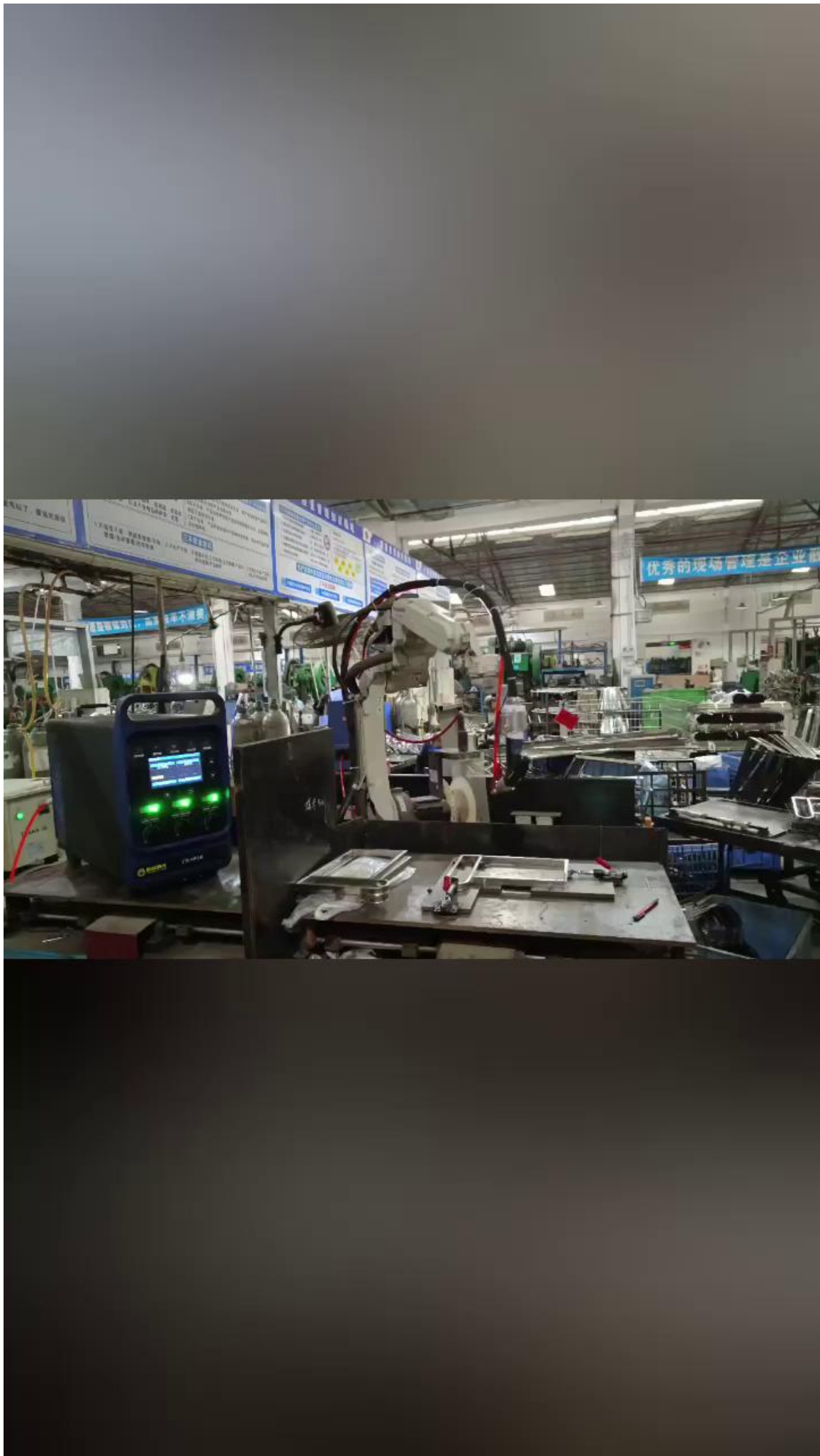
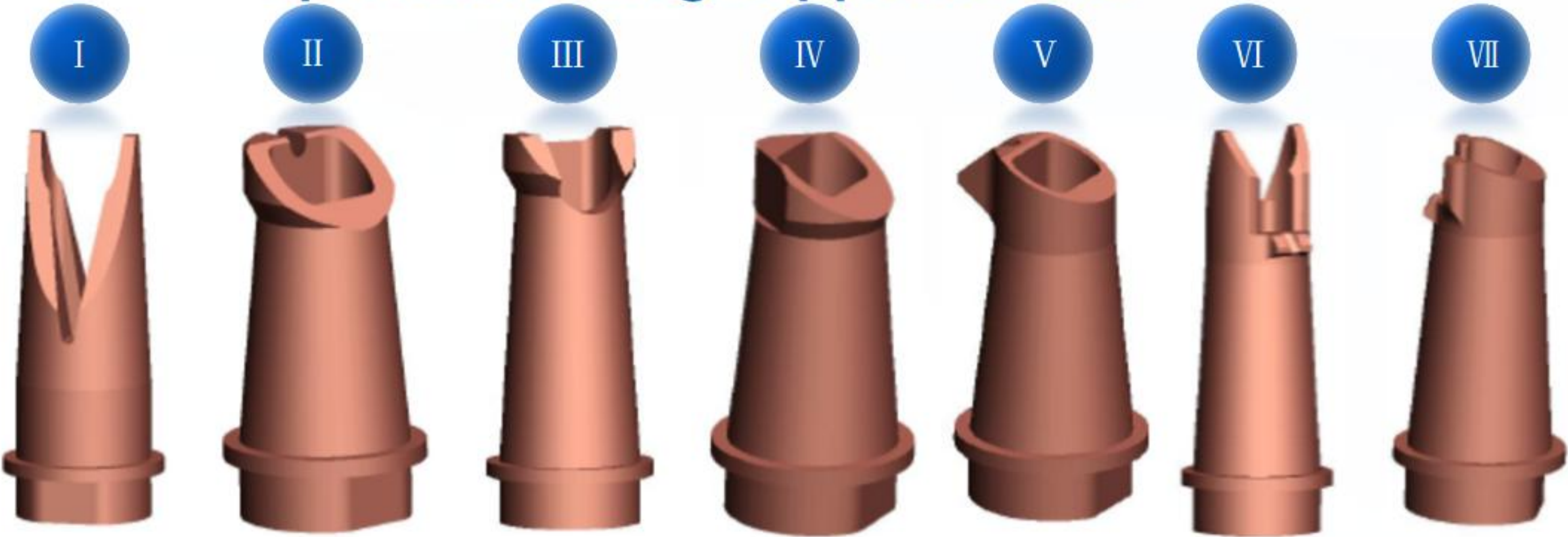
Equipment research and development of refrigerant direct cooling system, handheld welding machine with operating temperature of $-20^{\circ}\text{C}\sim 60^{\circ}\text{C}$, with good environmental temperature adaptability, can continuously operate for 7 days \times 24-hour uninterrupted work



手持激光Handheld laser welding



专用焊接铜嘴
Special welding copper nozzle



THANK
YOU

